

SOUNDPROOFING
WASTEWATER PIPES

TECSOUND® TUBE S



TECSOUND® TUBE S



Tecsound® Tube is a soundproofing complex made out of **Tecsound** membrane bonded to a non-woven porous polyester fleece. The new S version comes with two self-adhesive strips, for an easier installation.

Tecsound® Tube S is **specially designed** for :

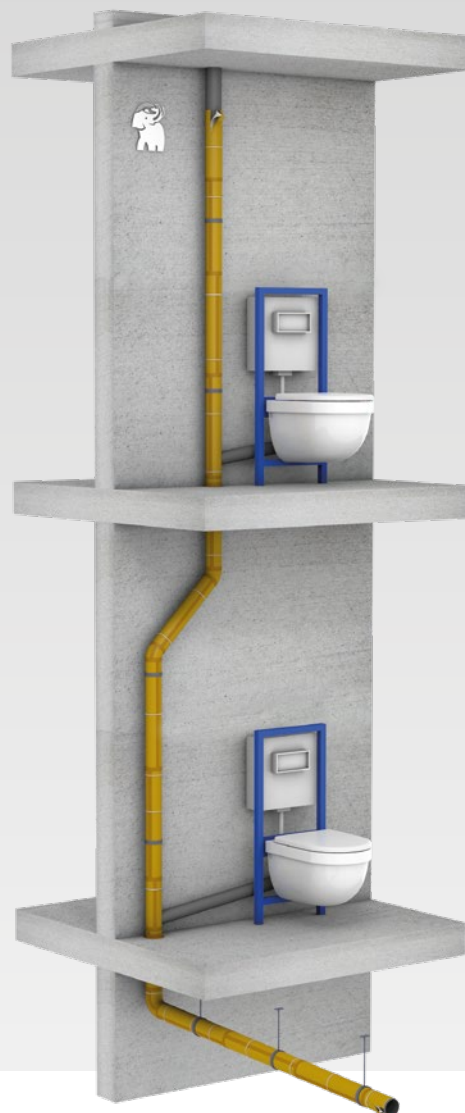


Soundproofing of waste water pipes (tertiary and residential buildings).



Vibration damping and **structural noise attenuation**.

Tecsound® Tube S is suitable to soundproof all type of pipes: PVC, fiber cement, metal.



TECSOUND® TUBE S

- Thickness → **4,75 mm**
- Dimension of roll → **8 x 0,4 m**
- Roll per pallet → **40**

Sales unit : roll.
Vertically placed on pallet.

ACCESSORY

Tecsound® S50 Band 50



The +

- Low thickness helps installation.
- Suitable for new and refurbishment projects.
- Does not crack or break at low temperatures.
- Practical use: suitable for use in confined spaces, flexible and adaptable to elbows and branches.
- Excellent ageing resistance.
- Easy to handle and cut.
- Easy and quick installation directly on the pipe.
- New version with self-adhesive strips for positioning and overlapping eases the installation.
- High performance : significant reduction of airborne and impact noise.



* Information on the level of emission of volatile substances in indoor air, presenting a risk of toxicity by inhalation, on a class scale ranging from A+ (very low emissions) to C (high emissions).

INSTALLATION GUIDELINES

A- Cut the roll at the desired length not exceeding 1 meter.
If the diameter is below 100 mm, cut the roll crosswise at the pipe diameter providing further 50 mm for the overlaps.
Remove the protective film from the self-adhesive strip.

B- Wrap the **Tecsound® Tube S** with the polyester fleece in contact with the pipe and overlap using the self-adhesive strips. Gradually cover the duct. In case of refurbishment, pipe clamps must be open to allow a continuous insulation of the pipe.

C- Fasten the product using cable ties every 30-40 cm.

D- Seal overlaps and joints using **Tecsound® S50 Band 50**.

E- Apply **Tecsound® S50 Band 50** to elbows to improve impact noise damping. Apply the adjoining pieces butt joined without leaving any gaps.

Warnings

- In case of refurbishment, start the installation of the Tecsound Tube S from the pipe clamps. Calculate the number of pieces needed.
- If new installation, please ensure that the pipe clamps are big enough to embrace the soundproofing solution.



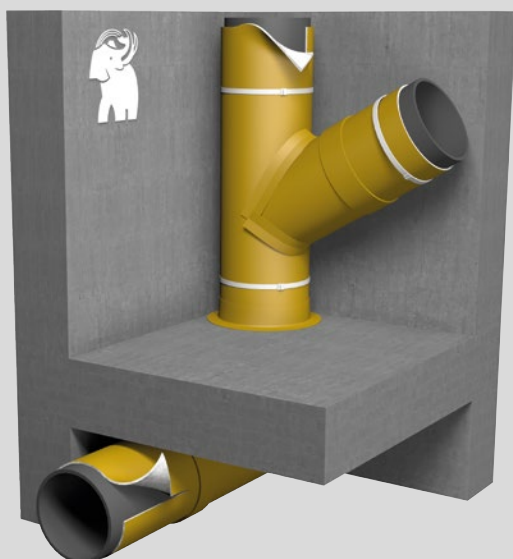
Acoustic performance

Soundproofing Solution performance Index

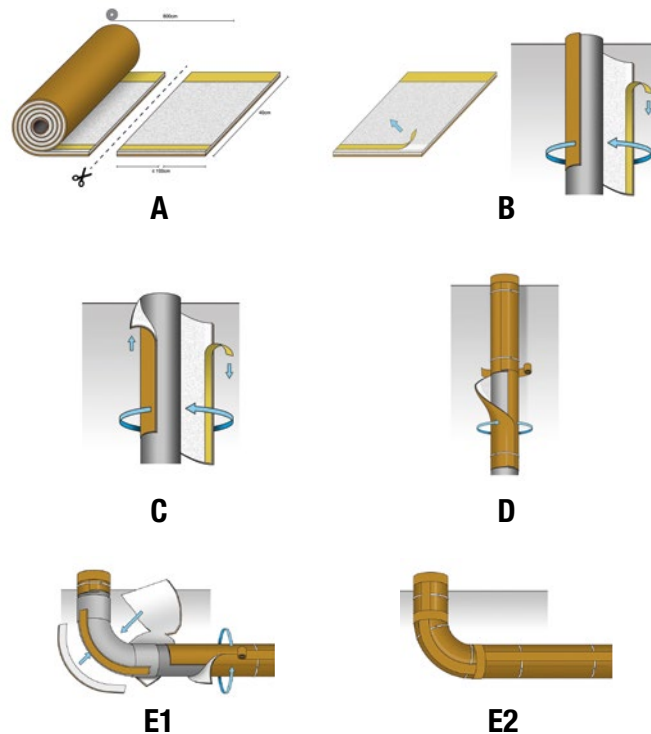
Insertion loss factor ($IL_{a,A}$):

Measured in dB(A), defines the acoustic performance following EN 14366 (2005) of the insulation wrapped around a 100 mm PVC waste water pipe.

The higher the $IL_{a,A}$, the better the insulation.



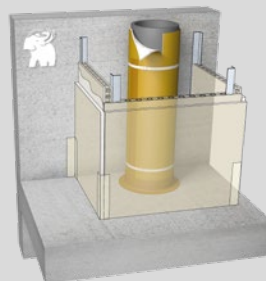
Characteristics	Value
Flow	2,0 l/s
Airborne noise L_{an} bare PVC pipe	55
Airborne noise L_{an} PVC + Tecsound Tube S	41
Acoustic insulation - Insertion loss of airborne noise ($IL_{a,A}$)	14



Acoustic performance of the pipe technical shafts

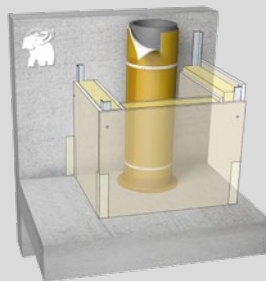
Airborne noise pressure level L_{an} and structural noise L_{sc} measured in dB (A) of the waste water pipe L_{nAT} radiated in a room = $L_{an} + L_{sc}$.

The lower L_{nAT} , smaller is the noise emission.



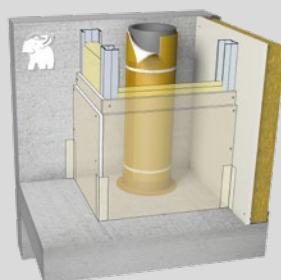
Honeycomb partition 50 mm

Characteristics	Bare PVC	PVC + Tecsound TUBE
Straight vertical pipe	36	23
Vertical pipe with 45° deflection	44	33
Horizontal pipe	41	28



Lightweight partition with mineral wool

Characteristics	Bare PVC	PVC + Tecsound TUBE
Straight vertical pipe	25	18
Vertical pipe with 45° deflection	35	26
Horizontal pipe	29	20



1/2 partition, 2 plasterboard standard with mineral wool

Characteristics	Bare PVC	PVC + Tecsound TUBE
Straight vertical pipe	24	16
Vertical pipe with 45° deflection	34	25
Horizontal pipe	28	18



SOPREMA Group at your service

Looking for a sales contact ?

Contact our Customer Service

☎ **33(0)3 88 02 11 79**

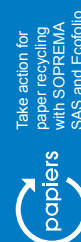
All the information is available in our website

www.soprema.fr

www.tecsound.fr

contact@soprema.fr

contact@tecsound.fr



SOPREMA SAS WITH A CAPITAL OF 50,000,000. REGISTERED OFFICE : 14 RUE DE SAINT-NAZAIRE - 67100 STRASBOURG.

POSTAL ADDRESS : CS 60121 - 67025 STRASBOURG CEDEX - FRANCE - TEL : +33 3 88 79 84 00 - FAX : +33 3 88 79 84 01. RCS STRASBOURG : 314 527 557.

SOPREMA reserves the right to modify the composition and conditions of use of its materials, and consequently their price, without prior notice, in the light of developments in knowledge and techniques.
Consequently, any order will only be accepted under the conditions and technical specifications in force on the date of receipt of the order.